

LaSalle Mariners Yacht Club  
**Annual Single and Double Handed Race**  
September 6, 2025

**Notice of Race and Sailing Instructions**

**1 RULES**

- 1.1 This event is governed by the Racing Rules of sailing 2025-2028
- 1.2 The equipment rules of sailing shall apply [www.sailing.org](http://www.sailing.org)
- 1.3 The Canadian Shipping Act-small vessel regulation (required safety equipment) shall apply [laws-lois.justice.gc.ca/eng/regulations/SOR-2010-91](http://laws-lois.justice.gc.ca/eng/regulations/SOR-2010-91)
- 1.4 The MWPHRF handicap system shall be used for scoring.

**2 COMMUNICATION**

- 2.1 All boats shall carry a VHS radio capable of communicating on channels 16 and 68. On the water, channel 68 will be monitored.

**3 ELIGIBILITY AND ENTRY**

- 3.1 This race is open to all sailboats, and the PHRF handicap system will apply.
- 3.2 There will be 2 classes or this race, Single and Double Handed. Both classes will have the same start time of 10:00am. Boats will be responsible for taking their own finish time.
- 3.3 Boats may enter the event by completing the entry form or registering online at [noticeofrace.net](http://noticeofrace.net) . Online registration shall be your electronic signature, initials and agreement to the terms on the registration form.

**4 FEES**     **There is no fee for this event.**

**5 SCHEDULE**

- 5.1 The start is at 10:00AM for all boats.

**6 COURSES**

- 6.1 See attachment A for the course to be sailed.  
Start will be between DA2 and D36 at approx 42.02.3802. Nx83.06.785.W.
- 6.2 The finish line will be between DA2 and D36
- 6.3 **PLEASE KEEP IN MIND, COMMERCIAL TRAFFIC ALWAYS HAS THE RIGHT OF WAY!**

**7 BERTHING**

- 7.1 All visiting boats are welcome to free dockage for the days prior and post event. Please reach out to Harbourmaster Brian Casey for necessary information (519) 991-9426

**8 PRIZE**

- 8.1 Trophy's will be presented for the Single handed and Double handed winner.

**9 RISK STATEMENT**

9.1 RRS 3 states: "The responsibility for a boat's decision to participate us a race or to continue to race is hers alone." By participating in this event each competitor agrees and acknowledges that sailing is a potentially dangerous activity with inherent risks. These risks include strong winds and rough seas, sudden changes in weather, failure of equipment, boat handling errors, poor seamanship by other boats, loss of balance on an unstable platform and fatigue resulting in increased risk of injury. Inherent in the sport of sailing is the risk of permanent catastrophic injury or death by drowning, trauma, hypothermia or other causes.

**10 TIME LIMITS**

- 10.2 There is no time limit for this race.

**11 PROTESTS AND REQUESTS FOR REDRESS**

- 11.1 There will be no protests accepted for this race unless there is damage requiring an insurance claim. In this case, the protest time limit is 60 minutes after the last boat has finished the race.

**12 DISCLAIMER OF LIABILITY**

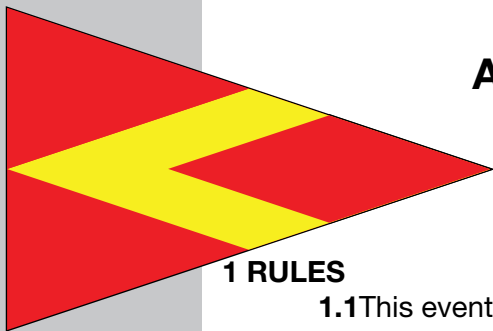
12.1 Competitors participate in his regatta entirely at their own risk. See RRS 4, Decision to race. The organizing authority will not accept any liability for material damage or personal injury or death sustained in conjunction with, or prior to, during, or after the regatta.

**13 FURTHER INFORMATION**

- 13.1 For further information please reach out to Race Chair Tony Berends at:  
[tonyberends@yahoo.ca](mailto:tonyberends@yahoo.ca)  
or [lmocracing@gmail.com](mailto:lmocracing@gmail.com)

**LaSalle Mariners Yacht Club, 2640 Front Road, LaSalle, Ontario N9J 2N1**

**SINGLE/DOUBLE HANDED RACE NOR/SI**





# Attachment A

## Single / Double Handed Course 1 29.8 NM

- 42°2.736'N • 83°7.812'W  
Start
- 1 Waypoint 1  
12.4 NM • 123° • 3h 02m
- 2 Waypoint 2  
9.4 NM • 263° • 2h 18m  
From start 21.8 NM • 5h 21m
- 42°2.735'N • 83°7.805'W  
8.0 NM • 352° • 1h 57m  
From start 29.8 NM • 7h 18m

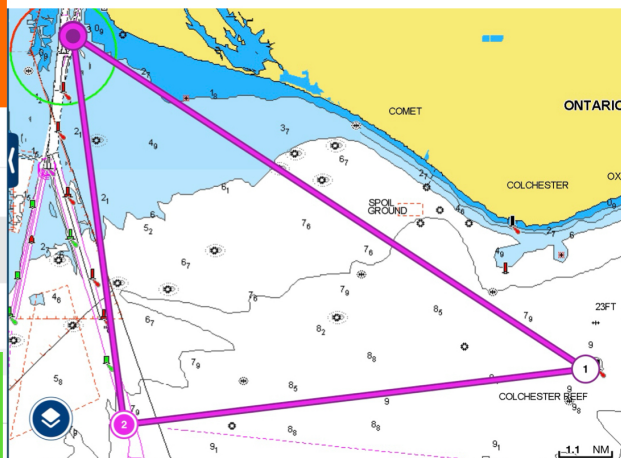
Start is in the vicinity of DA2 and D36.  
There is no Race Committee so please use GPS time.  
Round Colchester Reef Light to STARBOARD #1 on MAP  
Round East Outer Channel Light 1E to Starboard #2 on MAP  
Finish is between DA2 and D36

1000AM Race starts.

Please take your own finishing time.

All are welcome to join us at the Club afterwards.

29.8NM



Please join us back at LMYC after the Race for a BBQ and gathering. There will be Burgers and Salads and many stories to share.

## Single / Double Handed Course 2 - 27NM

- 42°2.736'N • 83°7.779'W  
Start
- 1 Waypoint 1  
12.5 NM • 123° •
- 2 Waypoint 2  
11.8 NM • 290° •  
From start 24.3 NM •
- 42°2.743'N • 83°7.811'W  
2.7 NM • 10° • 40m 12s  
From start 27.0 NM •

Start is in the vicinity of DA2 and D36 - There is no Race Committee, use GPS time.

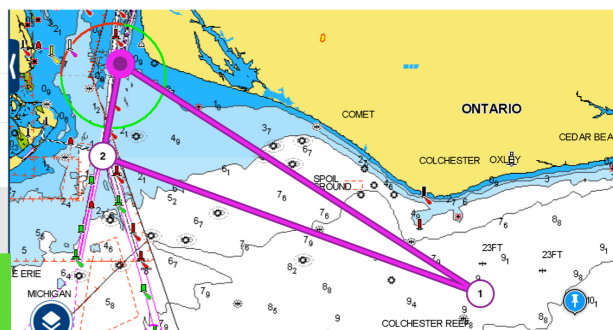
Round Colchester Reef Light to STARBOARD #1 on MAP  
Round Detroit Light to Starboard #2 on MAP

Finish is between DA2 and D36

1000AM Race starts.

Please take your own finishing time.

27NM



Please join us back at LMYC after the Race for a BBQ and gathering. There will be Burgers and Salads and many stories to share.



## Single / Double Handed Course 3 25.8 NM

- 42°2.734'N • 83°7.766'W  
Start
- 1 Waypoint 1  
12.7 NM • 122° • 3h 06m
- 2 Waypoint 2  
0.4 NM • 220° • 5m 40s  
From start 13.1 NM • 3h 12m
- 42°2.746'N • 83°7.811'W  
12.7 NM • 303° • 3h 06m  
From start 25.8 NM • 6h 18m

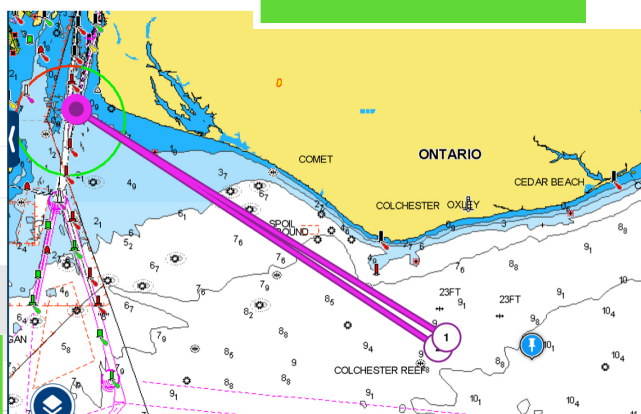
Start is in the vicinity of DA2 and D36.  
There is no race committee so please use GPS time.  
Round Colchester Reef Light to STARBOARD #1 on MAP  
Finish is between DA2 and D36

1000AM Race starts.

Please take your own finish time.

All are welcome to join us at the Club afterwards.

25.8 NM



Please join us back at LMYC after the Race for a BBQ and gathering. There will be Burgers and Salads and many stories to share.