

# Single / Double Handed Course 2 - 27NM

42°2.736'N • 83°7.779'W  
Start

1  
Waypoint 1  
12.5 NM • 123° •

2  
Waypoint 2  
11.8 NM • 290° •  
From start 24.3 NM •

42°2.743'N • 83°7.811'W  
2.7 NM • 10° • 40m 12s  
From start 27.0 NM •

Start is between the  
boat and DA2  
Round Colchester Reef Light to  
STARBOARD #1 on MAP

RC

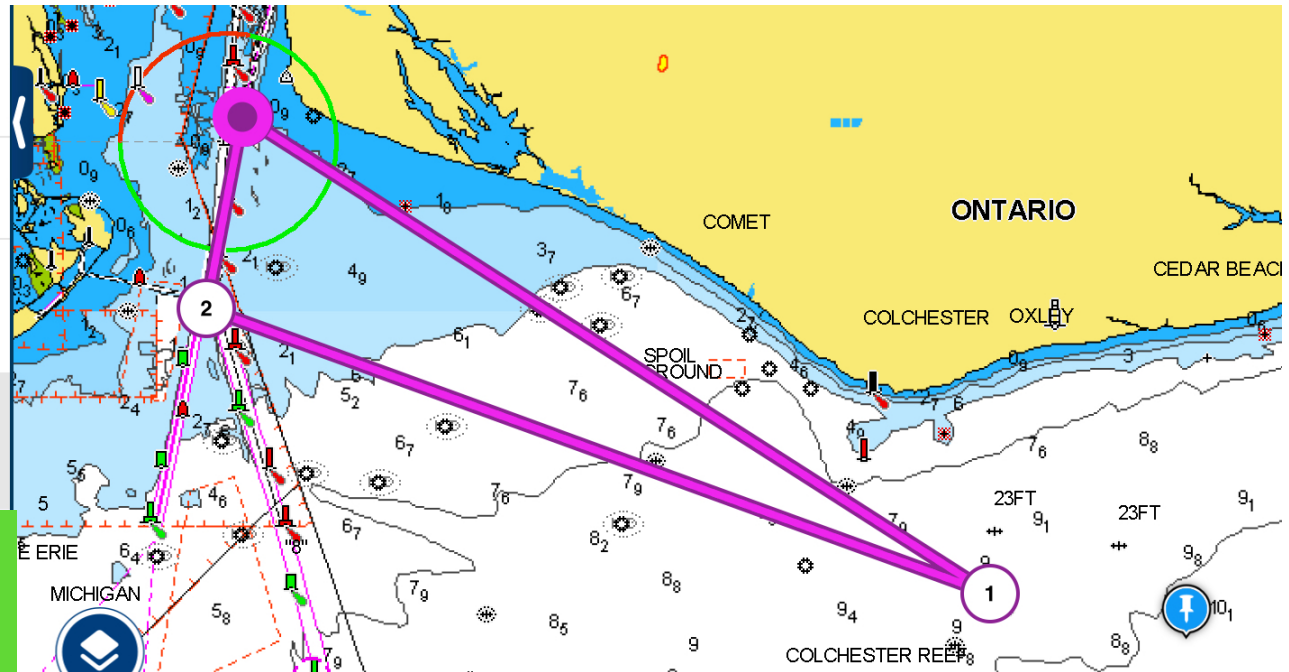
Round Detroit Light to Starboard #2 on  
MAP

Finish is between DA2 and D36

0954am - 5 horns signalling warning will  
be in 1 minute  
0955AM - warning signal for all classes  
1000AM Race starts.

Please take your own finishing time.

27NM



**Please join us back at LMYC after the Race  
for a BBQ and gathering. There will be  
Burgers and Salads and many stories to  
share.**

