

LaSalle Mariners Yacht Club

47th Annual Shakedown Race

May 20th, 2023

Sailing Instructions

Hosted by LaSalle Mariner's Yacht Club (LMYC), LaSalle, Canada

1 RULES

- 1.1** This regatta shall be governed by the rules as defined in the Racing Rules of Sailing 2021 - 2024 except where modified by the Notice of Race and Sailing Instructions. The Prescriptions of Sail Canada will apply. These can be found at www.sailing.ca
- 1.2** The Essex County PHRF Class Rules apply
- 1.3** PHRF boats unable to meet the Essex County PHRF Class Rules minimum crew requirement must race in the PHRF Short Handed Division.
- 1.4** The Equipment Rules of Sailing shall be used.
www.sailing.org/documents/equipmentrules/index.php
- 1.5** The Canadian Shipping Act - Small Vessel Regulation (required safety equipment) shall apply - laws-lois.justice.gc.ca/eng/regulations/SOR-2010-91
- 1.6** Boats shall carry proper sail numbers on main sails, spinnakers and any head sails attached having a luff perpendicular exceeding 130%. Yachts without proper sail numbers may be subjected to protest.

1(a) PHRF SHORT HANDED RULES

- 1a.1** Section 1 "Race Rules" shall apply, with the exception noted in 1a.2.
- 1a.2** Boats shall race with a maximum of 2 persons onboard.
- 1a.3** The use of a self-steering device is permitted.
- 1a.4** Boats in the Short Handed division are not eligible for the Avco Cup.

2 NOTICE TO COMPETITORS

- 2.1** Notices to competitors shall be posted on the official notice board inside LaSalle Mariners Yacht Club. Notices shall also be posted online at noticeofrace.net and lasallemariners.ca

3 CHANGES TO SAILING INSTRUCTIONS

3.1 Changes to the Sailing Instructions shall be posted on the official notice board inside LMYC by 20:00hrs on Friday, May 19th, 2023. They shall also be posted on noticeofrace.net

4 SCHEDULE OF RACES AND CLASS FLAGS

4.1 The warning signal for the first class is scheduled for 08:55 AM

4.2 Class rating and start order:

Class	Rating	Pennant / Flag Colour
JOG / JAM		WHITE
PHRF C	191 and higher	ORANGE
PHRF B	136 through 190	GREEN
PHRF A	135 and lower	YELLOW
PHRF Short Handed		PINK

4.3 Class flags / pennants (not smaller than 6"x6") shall be displayed from the after most backstay at least 6 feet above the deck. Boats without a proper flag may be subject to protest.

4.4 Changes to class splits shall be posted by 20:00hrs on Friday, May 19th, 2023 at LMYC on the official notice board. Changes shall also be posted on noticeofrace.net and on lasallemariners.ca. Please check to verify splits.

5 COURSE AND MARKS

5.1 The starting line shall be off Bar Point and Willow Beach (approx. 3/4 nm easterly of permanent light tower 33D). The Race Committee Boat shall be on station at approximately 42.02.3802. N x 083.06.785.W.

5.2 The course shall leave North Bass Island Red Nun Buoy #2 to port. (41.42.61.N x 82.51.43.W)

5.3 The distance for handicaps is 26 nautical miles

6 THE START

6.1 Races shall be started using RRS 26

6.2 The starting line shall be between the orange flag on the committee boat and the mark to the east of the race committee boat.

7 THE FINISH

7.1 The finishing line shall be perpendicular from RC Blue flag on a Race Committee Boat to a flag pole on Middle Bass Island, leaving the Race Committee Boat to starboard. The Race Committee Boat shall be on station at 41.80.050.N x 82.48.500W (approximately 0.2nm south of the ferry dock on Middle bass Island). In the event that the Race Committee Boat is not on station, competitors are instructed to sail to the above co-ordinates and record their finish time using a gps clock. Finish times may be handed in to the Race Chairman at Millers Marina.

8 TIME LIMITS

- 8.1** There shall be no time limit. The Race Committee Boat may leave the station 8 hours after the warning signal is made. All yachts finishing after this time must take their own time and report it to the Race Committee.

9 PROTESTS AND REQUESTS FOR REDRESS

- 9.1** Hearing request forms will be available from the race committee at the finish line. Protests and requests for redress shall be delivered there within the appropriate time limit.
- 9.2** For each class, the protest time limit is 60 minutes after the last boat has finished the race.
- 9.3** Notices will be posted no later than 30 minutes after the protest time limit to inform competitors of hearings in which they are parties, or named as witnesses, or where the hearings will be held.
- 9.4** All provisions of RRS 60 shall apply. Awards for any class and the overall race will not be presented where a pending protest may affect an award place.
- 9.5** Notice of protests by the race committee or protest committee will be posted to inform boats under RRS 61.1(b)

10 INSURANCE

- 10.1** Each participating boat shall be insured with valid-third party liability insurance. Proof of insurance shall be provided as part of the registration requirements.

11 DISCLAIMERS of LIABILITY

- 11.1** Competitors participate in the regatta entirely at their own risk. See Rule 4 of the Racing Rules of Sailing - Decision to Race. The organizing authority will not accept any liability for material damage or personal injury or death sustained in conjunction with or prior to, during, or after the regatta.

12 RADIO COMMUNICATIONS

- 12.1** The Race Committee will monitor VHF channel 68.
- 12.2** While racing, except in an emergency, a boat shall not make voice or data transmissions and shall not receive voice or data communication that is not available to all boats. This restriction also applies to mobile telephones.
- 12.3** If a boat retires from a race, it is the boat's responsibility to inform the Race Committee as soon as safely possible, preferably over the VHF channel 68. If no response from the RC, please reach out to the race director Susan Brosseau's cell phone at 519-562-7210

13 CUSTOMS

13.1 Skippers are responsible for making sure they follow the proper customs procedures for their boat and crew. The organizers of this regatta and LMYC are not responsible if the procedures change.

13.2 If you possess a valid I68 or Nexus card, you must call customs upon arrival at 1-888-523-2628. If you are using the videophone system (near the public washrooms), all that is required to enter is a passport. Canadian boats returning to Canada must call 1-888-CAN-PASS at a designated port of entry. LMYC is a designated port of entry. The Can Pass app may also be used.

14 FURTHER INFORMATION

14.1 For further information, please contact race director Susan Brosseau at 519-562-7210 or via email at lmycracing@gmail.com

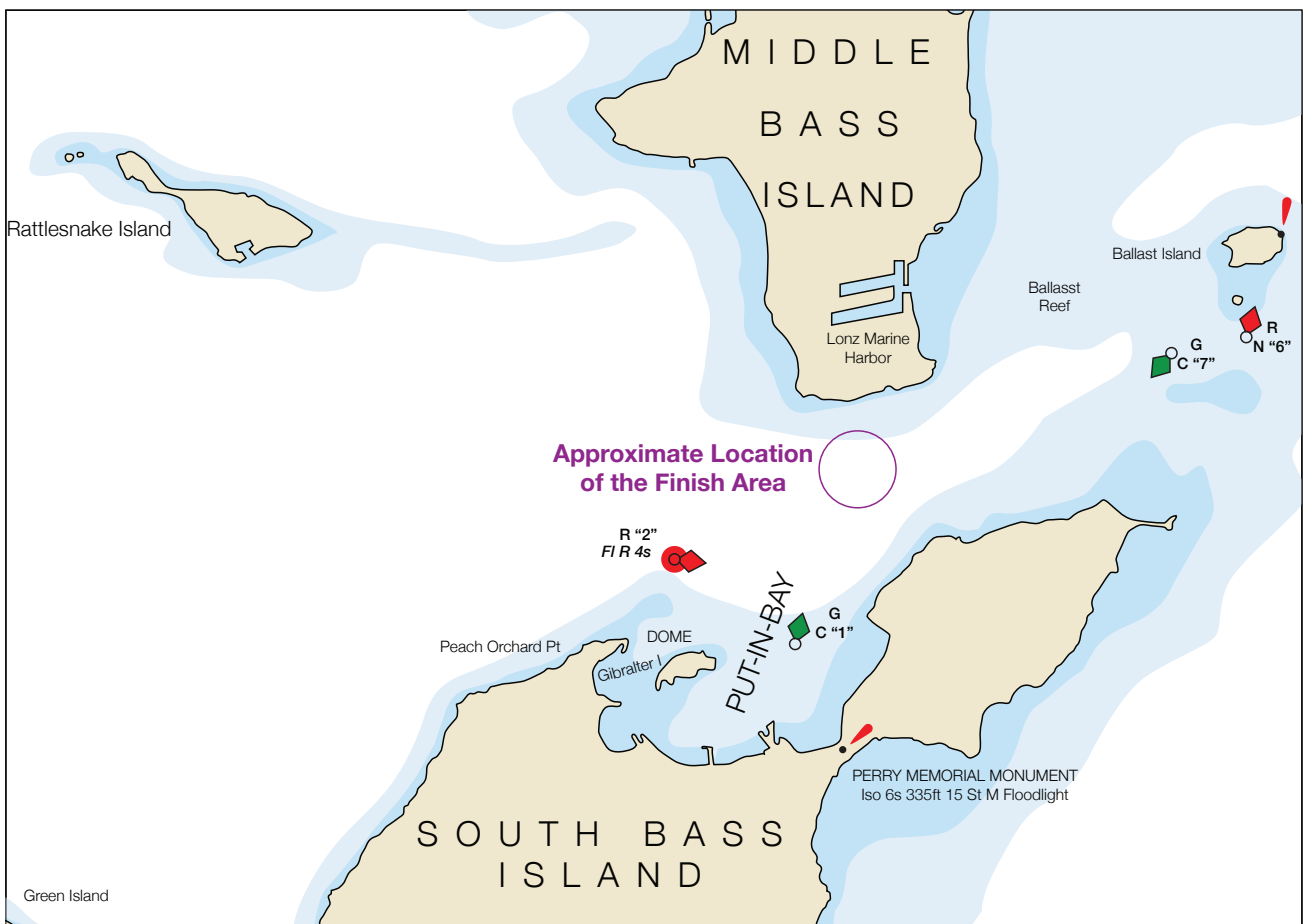
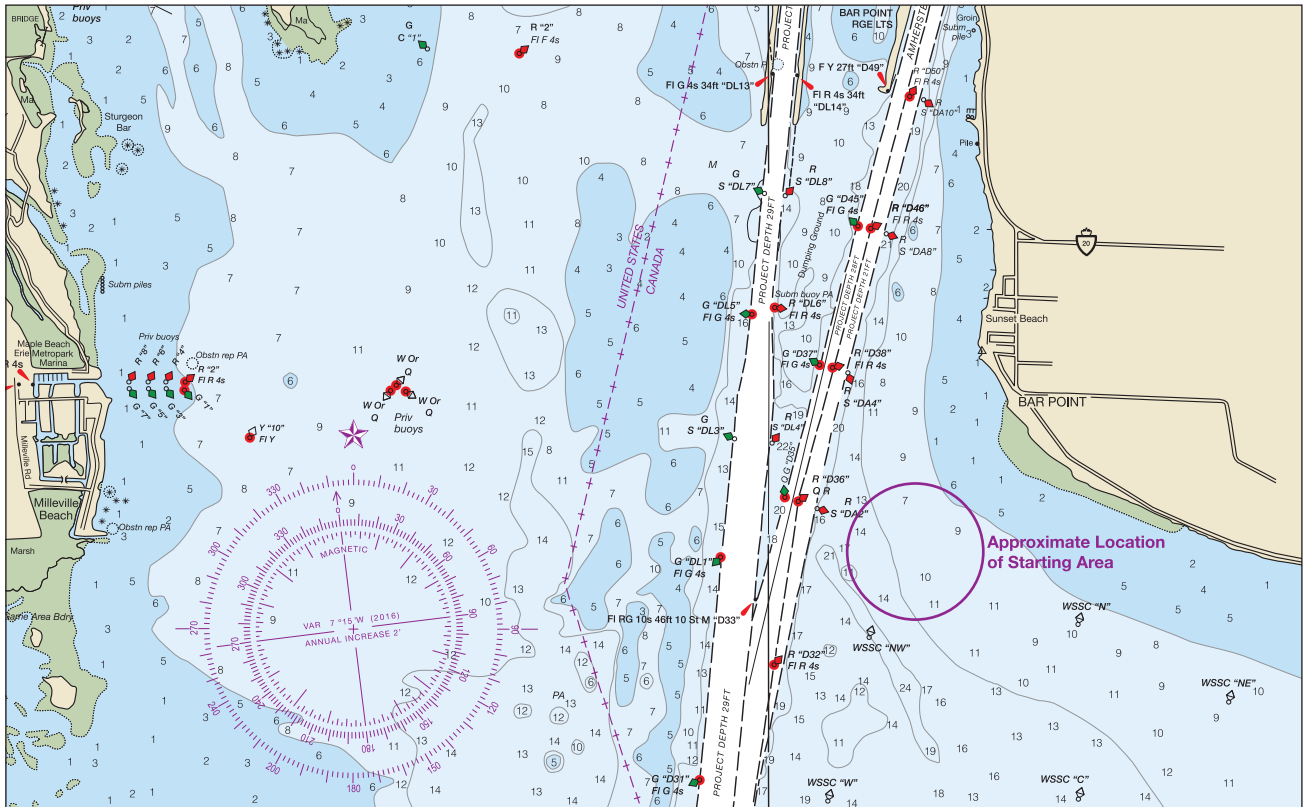
ATTACHMENT A

Shows the location of LMYC



ATTACHMENT B

Shows the chart locations of the racing start and finish areas.



ATTACHMENT C

The diagram in attachment C shows the course.

