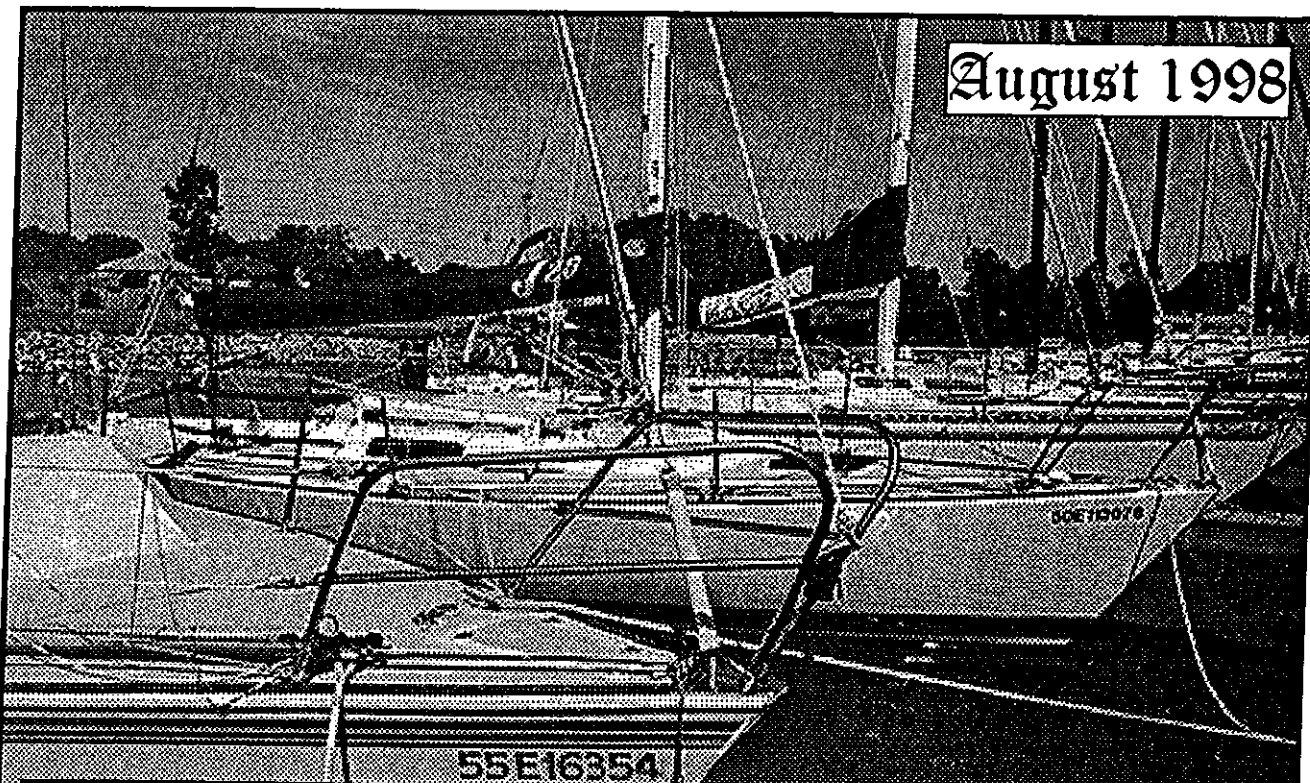


August 1998



# La Salle Mariner's Yacht Club

LaSalle Mariner's North Harbour

## LaSalle Mariner's Yacht Club 1998 Officers

**Commodore:** Bob Bingham 736-1245

**Vice Commodore:** John Amyot 253-8878

**Secretary:** Elaine Prettyman 978-9820

**Road and Grounds:** Lothar Bauer 734-1146

**Race Director:** Bob Reaume 978-0947

**Treasurer:** Yvonne McRobbie 978-1756

**House Director:** John Murphy 256-3302

**Social Director:** Perry Basden 972-5949

**Harbour Master:** Ralf Fiedler 969-7995

### *Refreshments*

Jim Blackton 734-8746

Yvonne McRobbie 978-1756

Ralf Fieldler 969-7995

### ***Publisher***

*Ralph Kepran*

## **The Currents**

Published by LaSalle Mariner's Yacht Club

### ***Editor***

*Richard Parchoma*

1968

**LaSalle Mariner's Yacht Club**

2640 1/2 Front Road

LaSalle Ontario, N9J 2N1

1998



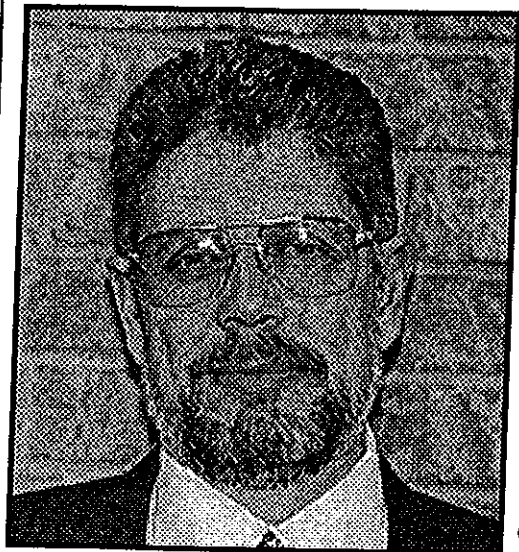
# LaSalle Currents



Volume # 2 Issue #8

August, 1998

Official Publication of LaSalle Mariner's Yacht Club



## From the Commodore

It's hard to believe that it is already August and our sailing season is half over. At this writing many projects are in progress and some have been completed. The patio doors and new steps have been installed. We have also installed a new refrigerator purchased from **Bergeron Furniture** in LaSalle. It is still my hope that the North Wall Walkway is started soon with many members offering help to get their work hours in and improve the looks of our wonderful club. The brick walkway entrance and landscaping in front of our club is slated to be finished when you read this newsletter or shortly into August.

The Ice Machine has been moved to the Pumpout and a lock has been installed. Your key to the clubhouse will open it. If not contact Ralf Fiedler.

We have done an excellent job with keeping the front of our clubhouse free of cars. Good job and please keep it up.

A reminder to the Monday and Wednesday night racers to please put away your refreshment bottles and empty your ashtrays before leaving. Leave the clubhouse as you would leave your home.

Members looking for work hours. The Widow's Walk is in desperate need of cleaning. Need I say more. Shakedown will be here before we know it and I anticipate a good turnout from the club. Volunteers will be needed to assist Gloria and Perry Basden in preparing for the Regatta. See you on the course.

Commodore: *Bob Bingham*

## Loran System Saved From Early Shutdown

Loran-C, a reliable and economical radionavigation system used by boaters, aviators appears to have been saved from a premature shutdown and may be operated by the federal government until 2008. The decision follows a high level meeting of Department of Transportation, Federal Aviation Administration and U.S. Coast Guard officials, and must still be affirmed by the Secretary of Transportation. Operated by the U.S. Coast Guard since the 1970s, Loran was targeted in 1994 for a shutdown as early as 2000 due to budget concerns, rather than be operated until 2015 as planned.

*The Currents is published monthly. While The Currents has researched and inquired to assure that information contained in The Currents is accurate, we recommend that you double check, to assure complete accuracy. Not receiving The Currents? Call the editor to get your copy!*



# Sailors' Health

## 6 Reasons To Cut Salt

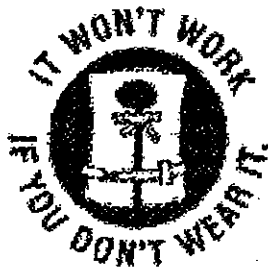
**H**ere's why less salt is good for you, courtesy of the Centre for Science in the Public Interest, a U.S. consumer advocacy group:

- ♦ Don't assume you're not sensitive to salt. Salt sensitivity is common.
- ♦ Cutting salt remains safe. Low-salt studies have scared people. But some of the studies have been flawed.
- ♦ Salt can cause more than hypertension or high blood pressure.
- ♦ A growing body of evidence indicates salt increases the excretion of calcium and the risk of asthma, stomach cancer and heart enlargement.
- ♦ Just because you don't have high blood pressure, doesn't mean you won't. The risks increase for people in their 60s and older.
- ♦ Even Canada's food guide says so. Recommendations for healthy eating suggest, among many other things, limiting salt, alcohol and caffeine.



## BURIAL AT SEA

Although burial at sea are much less common than in the days of sailing ships, they still occur on occasions when people die during a voyage and the boat is still a long way from its destination. A service is held on board and the weighed coffin is lowered into the sea. Sometimes a burial at



sea is carried out in accordance with a dead person's wishes, or the ashes are scattered over the waves after a cremation.

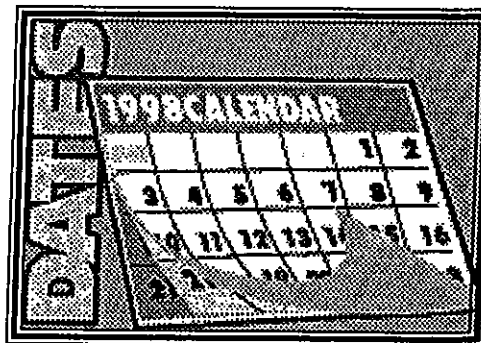
In ancient times sea burial was often practised as a cheap method of disposing of dead slaves, foreigners and people considered of little importance. Today some islands, where land is scarce, reserve parts of the sea near the coast as cemeteries.

Viking chiefs before the 10th Century were cremated on burning ships to symbolize a voyage to the land of the dead.

## Nautical Definition of the Month

### "Poor John"

"Poor John" is the name given by seaman to salted and dried fish of the cheaper varieties, such as hake and cod, when supplied as part of the ship's stores.



- ♦ August 1 - GIYC Down River Race
- ♦ August 2 - Deep Water Race to Put-in Bay
- ♦ August 3-4-5 - Bay Week
- ♦ August 8 - Ford Yacht Club Regatta
- ♦ August 14 - Ford Yacht Club Night Race
- ♦ August 21-22-23 - Cadel Sail
- ♦ August 22-23 - SPSC Regatta
- ♦ August 27 - General Meeting 1900 Hours
- ♦ August 30 - LMYC 30th Regatta



# RACING RULES

◀ *by Juergen Hendel* ▶



**A**s a seasoned campaigner I have seen many changes affecting our great sport of competitive sailing. Visibly and most obvious are the Hi-Tec sail fabrics and sail construction. You can see a racer from a mile away. Synthetic materials and building methods have led creative designers to produce "Rocket ships" of all sizes that burn up today's race courses. Loran, GPS and all sorts of electronic goodies have been added to the bag of tricks available to today's racer. Armed with all this and a magnitude of scholastic material, he or she can combined with their own skills can take their "game" to any level desired.

In our unique sport racers and their fellow competitors will race under rules written by sailors compiled in a book and updated periodically. Without referees on the course, only the racer and their peers control the "game". They can call attention to an infraction of a rule and protest such actions by another, if deemed appropriate. But like today's wonderful cars, what about their drivers? Less visible to the onlooker but certainly evident to the participants, is the change in attitude on the race course. But then only the well seasoned racers have come to realise this.

Life in our present society has brought an element of harshness into our wonderful sport. Gone are the days when a sailor would voluntarily retire from an event for his infraction of a rule. It was his or her choice or disqualification. Today they can hit marks and exonerate themselves by a 360 degrees turn and carry on. Fool someone and do a 720 degree turn and carry on, or as in too many cases just carry on and argue it out in a protest hearing.

Well, at least the elements of wind and water remain unchanged.

A reminder to our Monday and Wednesday night racers:

Alternate penalty= scoring penalty -44.3 (a), (b), (c)

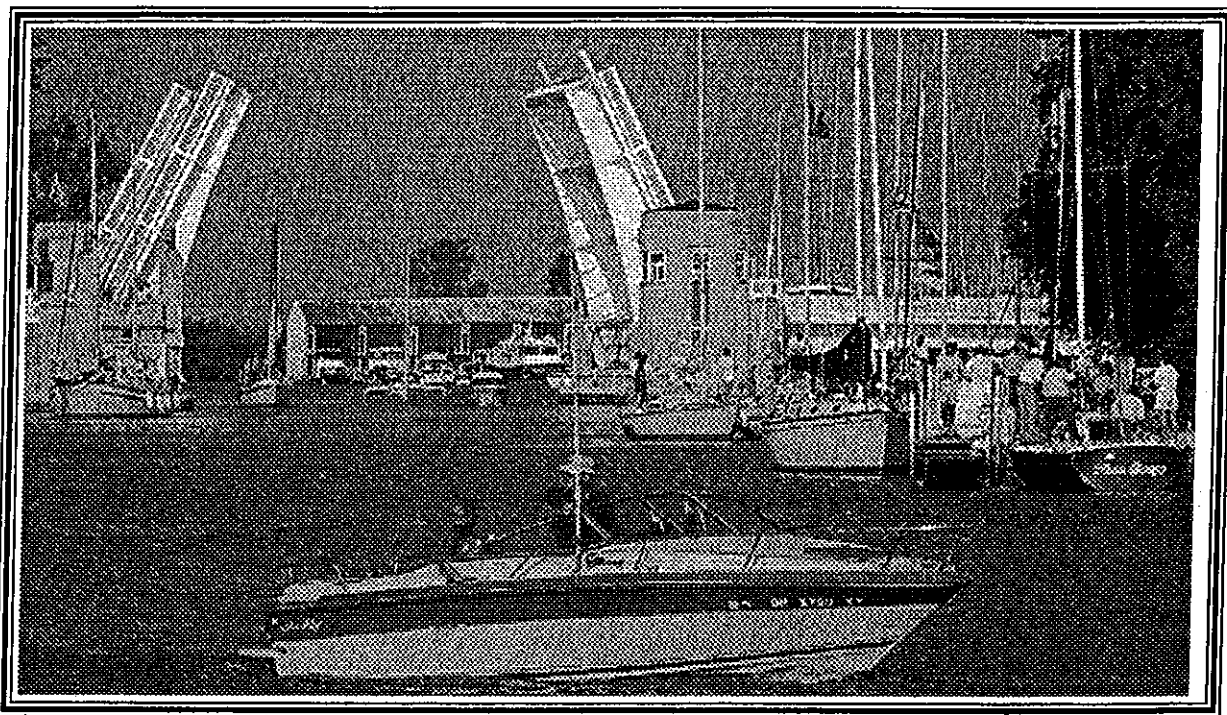
A boat takes a scoring penalty by displaying a YELLOW FLAG ..... that means when a boat lodges a protest against you on the course, you may accept a scoring penalty of 20% of the boats in your class; worse than your actual finish by three places minimum, but not worse than D.N.F. The proper flag is CODE FLAG 1, but plain yellow will do. I bet I can find at least two, but I never saw one flying yet.

Fair sailing, J.C. Hendel

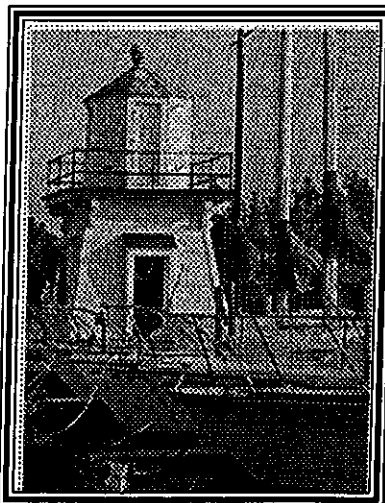
Note: A few high profile races have judges on the courses to keep protests to a minimum.

# PLACES TO VISIT THIS SUMMER

## Port Clinton Ohio



**P**ort Clinton is a great place to plan a weekend stay. Plenty of great dockage with electric and water, within a short walking distance to town. The town of Port Clinton includes many restaurants, bars, great little shops and if needed marine parts. It also includes the Port Clinton Yacht Club which is not a reciprocal club and charge \$1.00 per foot for ILYA members. If you choose to stay there it is the first club on your right just before the bridge. There is also a Great Scott grocery store which is opened 24 hours a day to restock supplies and within walking distance of the dock. The grocery includes



Old Light house at Port Clinton which guarded the entrance to the Portage River for 90 years now marks the entrance to Brands Marina

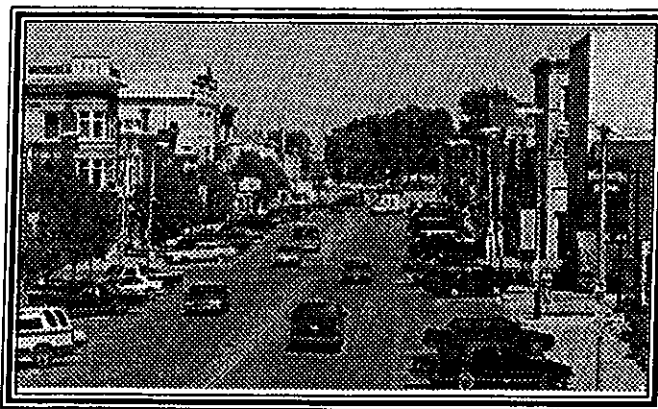
one of the only state stores (this is where Ohio sells liquor) in the area. The town is the home of the Jet Express which will take you to Put-in-Bay on a 40 knot, 20 min. ride. This, most of the time, is the only way to visit the island on a weekend. There is also a taxi service available in Port Clinton.

If planning a visit, Brands Marina is the place to call for dockage (419) 734-4212, they also monitor Channel 16 on the radio. Brands is a full service Marina and one of the few places to get diesel fuel in the area. This year dockage is .75 cents a

foot. Brands Marina is very large and docks are plentiful. At Brands Marina there are two large washrooms which when we were there were very clean. From the marina it is about a 15 minute walk across the bridge and into town.

There are also two beaches available, one is right across the street from Brands and the other is about 2 miles to the west of the Portage entrance.

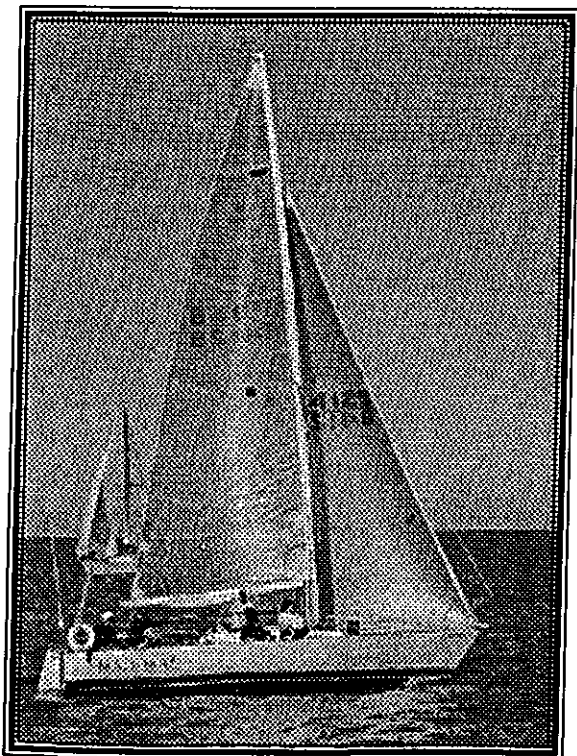
Port Clinton is on the Portage River, a deep water channel for the first half of mile, most of the time this is where the dockage will be. The channel is well marked and it's bearing is 210 degrees, any approach except from the extreme west is very safe, as with all approaches it would be best to line up on 210 degrees about a quarter mile out. Getting to overnight dockage will require you to go through a draw bridge which opens every half hour, on the hour and half hour, from 3 minutes before to 3 minutes after, so plan your approach accordingly. After the first half mile in the river the depth reduces to 4 to 6 ft. and requires that you stay in a poorly marked channel, this portion of the river really requires local knowledge or direction to be safe.



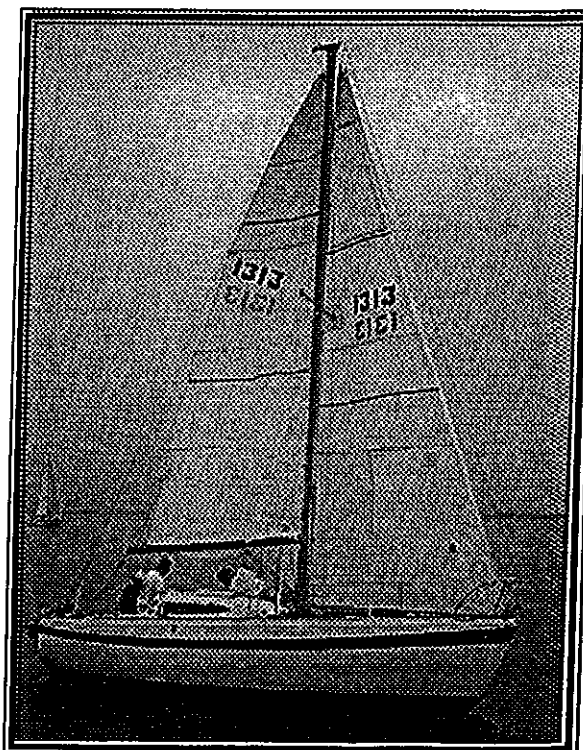
Down Town Port Clinton

## Thames River Regatta July 4 & 5th 1998

*Photos  
by  
Connie Buliga*



Alex Buliga on Mad Max

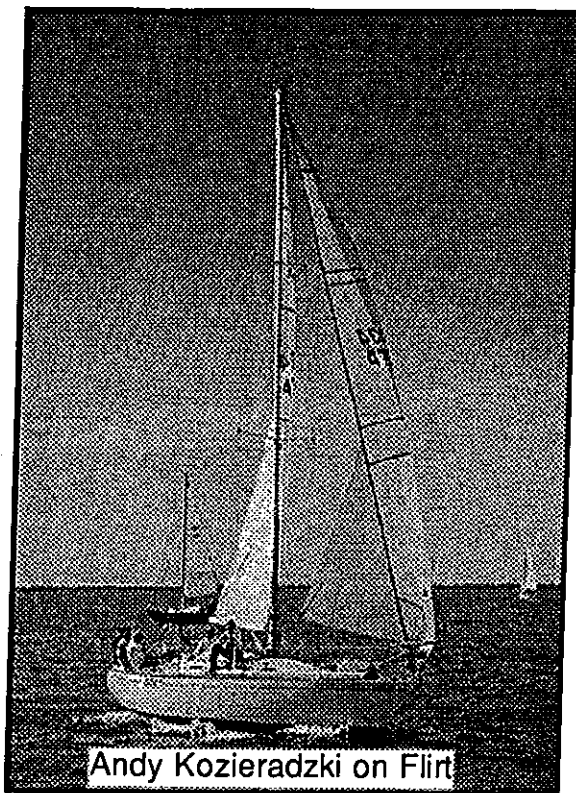


Alan Prettyman on Grey Gannet

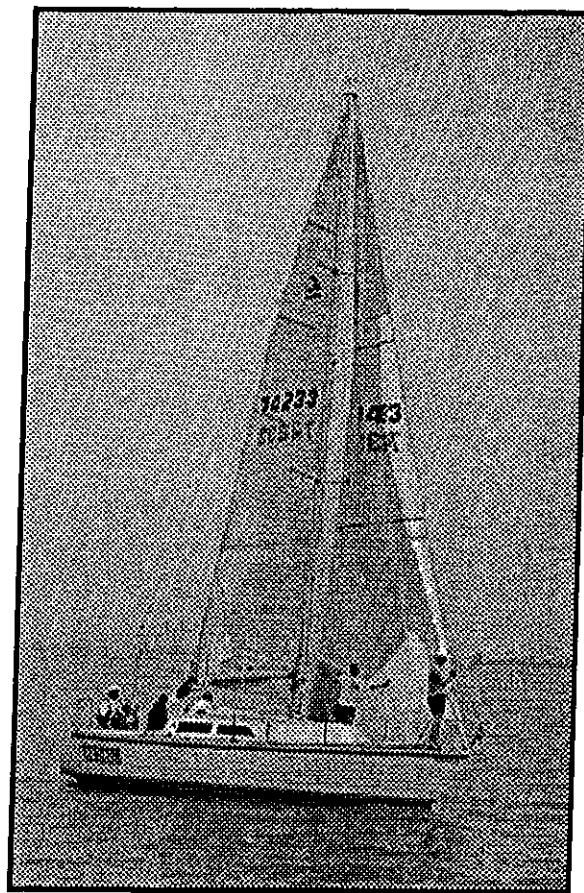




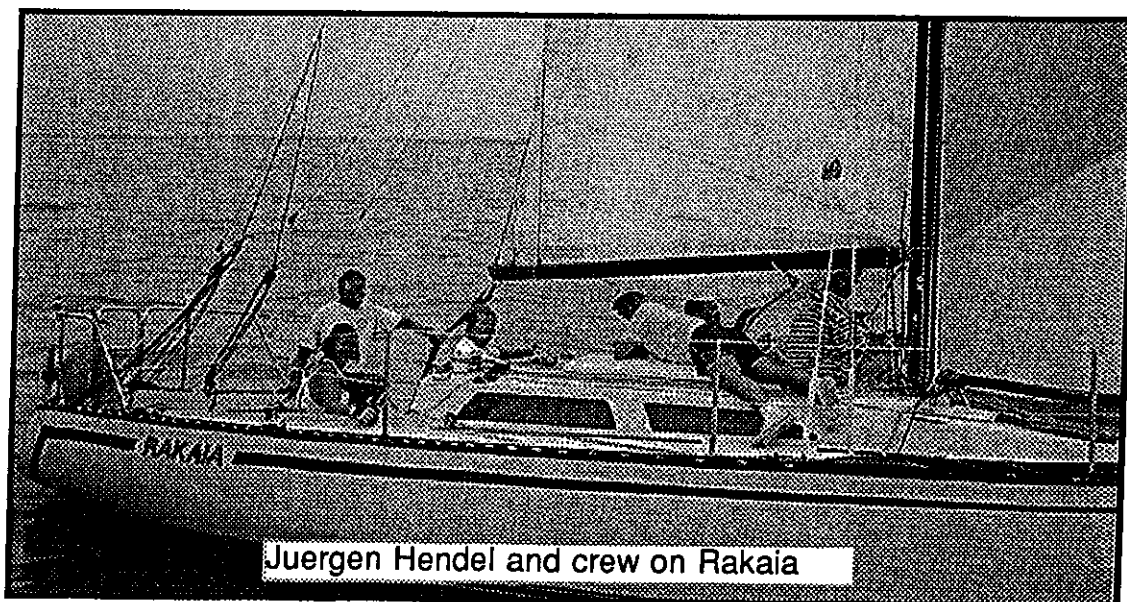
L.M.D.C.  
Photo Gallery



Andy Kozieradzki on Flirt



Commodore Bob Bingham on Circus



Juergen Hendel and crew on Rakaia

Thames River Regatta



# Port To Port

by  
Juergen Hendel

**T**his popular annual event, co hosted by LaSalle Mariner's Yacht Club and Grosse Ile Yacht Club had everything going for it, great weather, southerly winds, good parties, but sadly lacked participation from either club. Father's Day most likely was the reason.

There are three parts which make up this event. The first part is the Friday night barbeque bash at LMYC hosting the guests and crews of GIYC and our own members and guests. The second part is the Saturday race to Grosse Ile and the subsequent party. The third feature is a series of short races on Sunday on GIYC course.

On Friday Night, Gloria and Perry Basden (Social Director) and willing helpers laid out a magnificent spread for all and followed up with a thoughtful Continental breakfast the next morning to get the racers in shape for the task ahead.

**COME ON NOW, WHERE WERE YOU PEOPLE?** The Barbeque Party is for everyone and it is even FREE!. You pay to race \$20.00 Canadian, or US, which pays for the awards. One award rightfully goes to Gloria and Perry's Shore Party. Grosse Ile was equally spirited, so be there next year! The organizers promise to check the calendar.

Well, now to the race itself. Two classes of six boats in each answered the starting signals of

the Race Committee of two, Yvonne McRobbie and Jim Blackton and got under way tacking into the mild light air from our customary Wednesday night starting line.

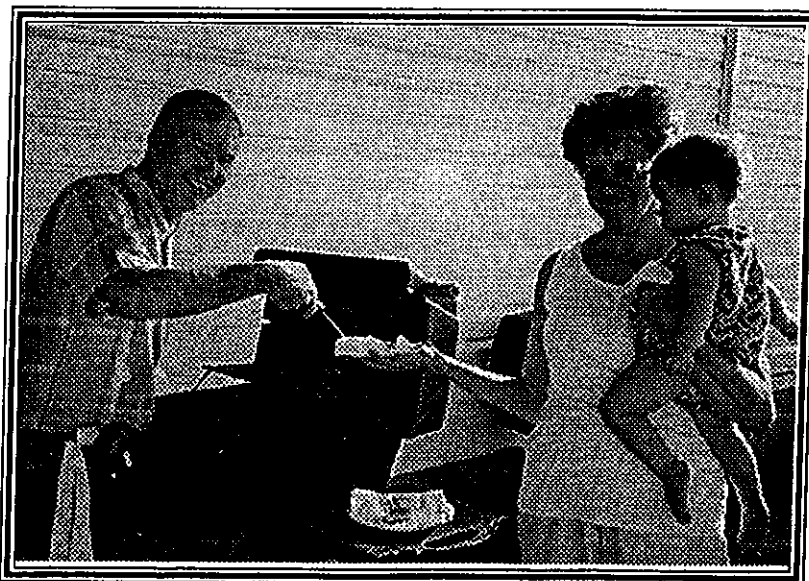
A good start ensured a good finish, as the southerly gradually built. The 39 foot 'HELLION' got her nose out into it and revelled in it to the finish first, followed by three Abbots, Commodore Bob Bingham 3 Ring Circus and Ralf Fiedler's 'Joe Louis'. Similar in the B Division, 'Bottoms Up' sort of "MOONED" her competitors, two Viking 28's, Bernie Wolter's HR 25, new member Donald Beneteau little Goman 20 and a Catalina 27. It was thus a beat all the way in a solid breeze. Thank God, because it was Hot .....

Lots of cold beer and shade quickly fixed whatever ails you. The always gracious Grosse Ile hosts never disappoint! In a new twist the finishing committee employed a "Current Correction Factor" to declare two winners of the A-Class, "Hellion" and "I Love You Baby", putting "Zephyr Hawk" into third Place.

B-Class winners were the jubilant crew of "Bottoms Up", with the Viking 28 "Marinator" as Runner up, followed by Bernie's "High Anxiety", who needed what he called "Rejects from

the Geritol A-Team". Fergie (Bob Ferguson) and Gord Freeman who must have taken some High out of the Anxiety.

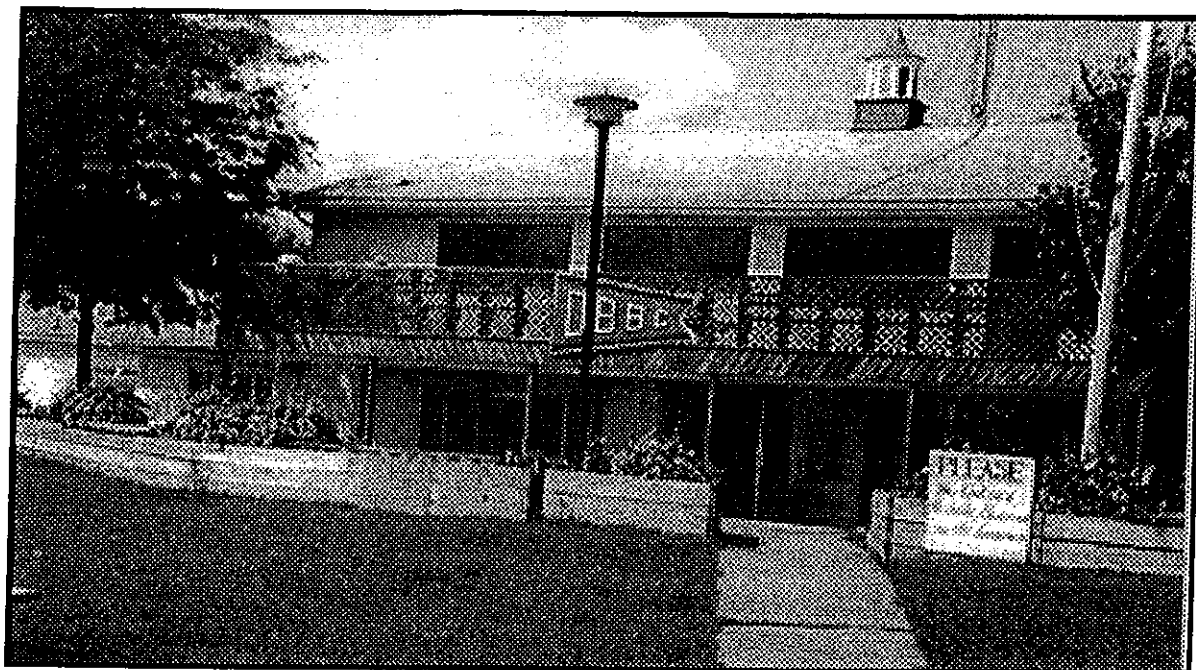
The Sunday Races were cancelled for lack of entries and to give the Dads their day, in the arms of their families.



Perry and Gloria Basden and granddaughter Emily preparing food for Racers and Guests



# PLACES TO VISIT THIS SUMMER



## Detroit Beach Boat Club Lat 41° 55.4 Long 83° 19.5

Detroit Beach Club is an interesting yacht club to visit this summer. If you are looking for a quick get away for a day or even a week, this may be the place to visit. Detroit Beach is an ILYA reciprocal club which is located in Brest Bay just a few miles south west of the Detroit River Light. When you leave LMYC and the sailing conditions are favourable the trip will take about 5 hours.

Detroit Beach Club is located on the east side of Brest Bay in Sandy Creek. The best approach is straight down the centre of Brest Bay. The entrance channel is flanked by spoil banks and submerged rocks. The spoils banks lie on the northeast side, while the rocks are on the southwest. A spoil area and a sandbar lie just at the mouth of the entrance. Once you have entered Sandy Creek, Detroit Beach Club is located about 1/3 of a mile upstream.

The club has a number of T docks on its approach. These are the guest docks with a water depth of over 6 feet. Detroit Beach offers 10 guest docks, with 3 free days to reciprocal

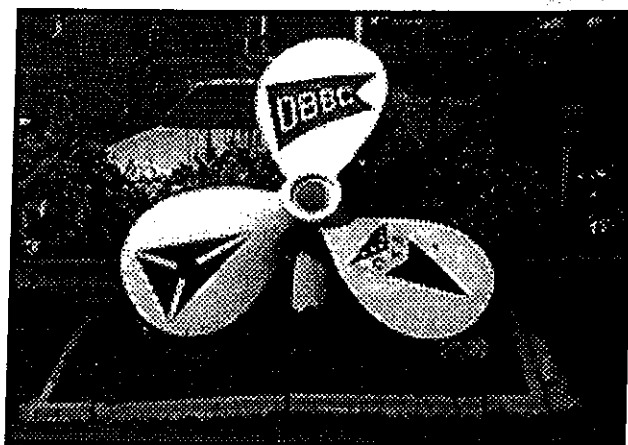
ILYA Clubs. The club has a small bar and its kitchen offers a wide selection of food.

The club is located in a safe area and you can find several convenience stores located just minutes away.

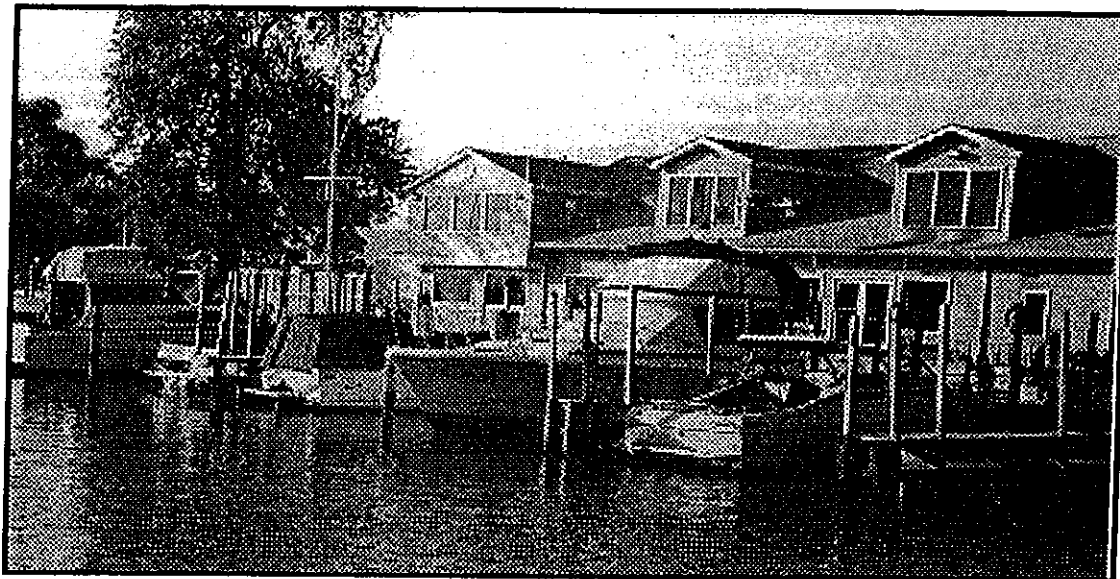
A very friendly club.

It is best to call ahead if you plan to visit.

Call 313-289-3222 and monitor channel 16



# PLACES TO VISIT THIS SUMMER



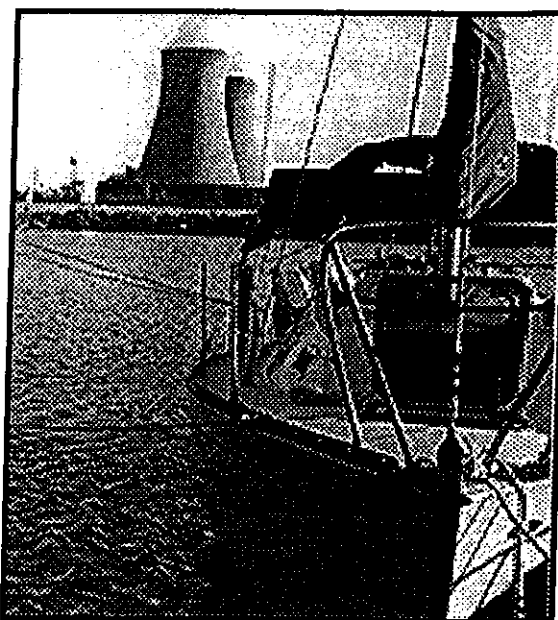
## Swan Boat Club Lat 41° 58.5 Long 83° 14.6

Looking for a good place to visit this summer. Swan Boat Club would be a good choice. This is an excellent club to visit on a weekend or any day during the week. From LMYC, it is only about a 4 hour sail. Swan Club members are excellent and when we were there, we were very well received. Swan Boat Club is located on Swan Creek which is about five and a half miles west-southwest from the Detroit River Light and three miles north of Stony Point. Twin concrete cooling towers at the Enrico Fermi Nuclear Generating Plant is a major landmark for finding this club. These towers are over 450 feet high and are visible for well over 25 miles at sea.

The Swan Boat Club is located approximately a half-mile inside the entrance on the north side of Swan Creek. As a private club, it offers transient facilities to affiliated ILYA Clubs. Depths alongside the club are reported to be at least six feet. It is always best to check ahead for water depth and to make sure a west wind is not blowing.

Swan Boat Club offers 5 guest docks with reciprocal days free. It has water and electricity at the docks with a pump out if needed. Showers are excellent.

Phone: 313-586-2002 VHF: Channel 16



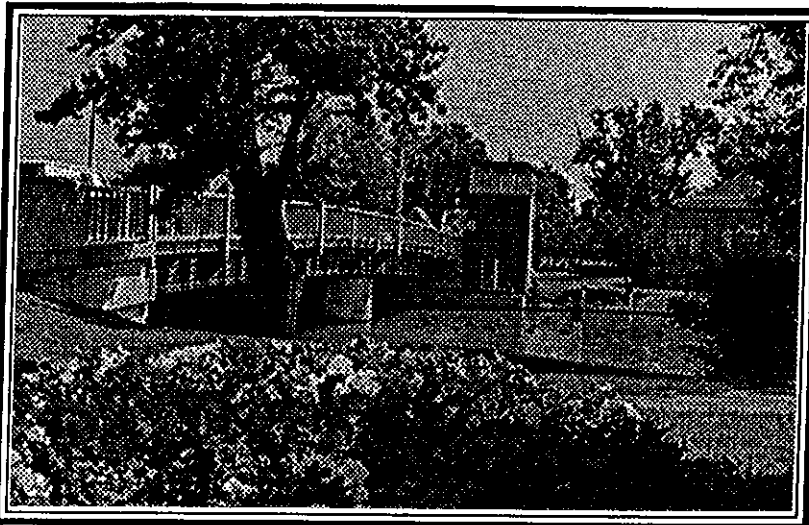
# PLACES TO VISIT THIS SUMMER

## Wallaceburg Ontario

Looking for a place to spend a few days away from it all. Wallaceburg just could be the place for you. Wallaceburg is strategically located along the banks of the scenic Sydenham River, which flows into the St. Clair River is about 45 nautical miles from South Port Sailing Club. The town presents itself in its easygoing friendly manner. It exudes the warmth and character associated with small town living. Originally a small settlement recognised for its significant contribution to the lumber and boat building industries, Wallaceburg has evolved dramatically over the past one hundred years.

Once you enter the Chenal Ecarte at the St. Clair River it is a leisurely 1 1/2 hour trip to Wallaceburg. There are four bridges you must pass before you enter the town. The first is the Walpole Island Bridge. This bridge is about a 40 minute (3 Nautical Miles) trip from the St. Clair River and opens on the hour daily from 7:00 am to 11:00 pm. It is best to time your arrival 10 minutes to the hour. The operator on our trip would not open 1 minute before the hour.

The next 7 miles of waterway is rich in natural beauty and wildlife. The marshy tracts where stands of bull rushes and giant feathery grasses undulate in the breezes provide excellent habitat for waterfowl and for fish such as bass, pickerel and perch. Along the river at times



*Margaret Avenue Bridge*

will be a momentary break from the marshes and spectacular homes flank the scenic banks.

You know when you leave the Chenal Ecarte and enter the Sydenham River at the forks, because the water to Wallaceburg is muddy while the Chenal Ecarte is deep blue.

The next bridge you will encounter is just on the outskirts of Wallaceburg is the Base Line Bridge. The sign reads that the bridge opens only on the half hour, but if you call the bridge master on channel 68, he will open the bridge on demand. The only time this is not true is between

the hours of 12:00 noon and 1:00 pm and 3:00 pm to 4:00 pm and this is because of heavy car traffic at those time.

Bridge number three, about 10 minutes

Walpole Island bridge opens only on the hour.

Other bridges will open on demand.

CLOSED

12:00 noon to 1:00 pm

3:00 pm to 4:00 pm



further along the river is a steel grey railroad bridge and it opens on demand.

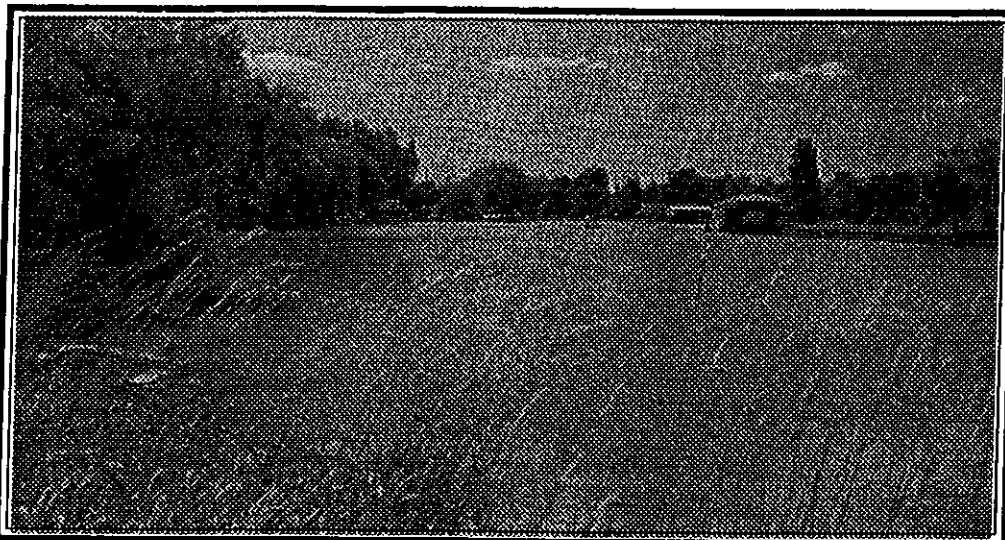
The last bridge we crossed was the Lord Selkirk Bridge and it is opened from 8:00 am to 10:00 pm on demand but is closed 12:00 noon to 1:00 pm and 3:00 pm to 4:00 pm daily.

The first city docks you will encounter is the Sitting

Park Docks on your port side and they are just before you cross the Lord Selkirk Bridge and the docking wall is 114 feet long. A very nice area with washroom facilities a few feet away.

On the other side of the Lord Selkirk Bridge is Civic Park Docks which are 180 feet long. Further down the river are five other docking sites. It is easy to recognise the city docks because of the white docking poles with red tops, and green steel fence way. I felt that the Civic Parks Docks were the best for location, beauty, peacefulness, and closeness to washroom facilities. The rates this year are 95 cents per foot for serviced docks and 70 cents per foot for unserviced docks.

From the Civic Docks, grocery stores, restaurants, Tim Horton Donuts are only a few minutes away. If you wish to go on a tour the Libby



Cruising the Chenal Ecarte

Glass Factory, it is only a 10 minute walk.

Whether you want to sight see, shop, or simply relax and take in its scenic beauty, this town offers something for everyone. An excellent place to visit.

---

## FROM THE TREASURER

Haul out will be here before you know it. Those members who wish to pay on the instalment plan until haul out please get in touch with me as soon as possible. Remember there is only 3 months left to the end of the boating season.

Treasurer *Yvonne McRobbie*

### *Deepest Sympathies*

*The officers and members of LMYC would like to extend their deepest sympathies to Alex and Connie Buliga on the passing of Alex's mother Zanfira on July 7, 1998. Your prayers are most appreciated.*

### *From The Harbour Master*

The weeds are beginning to grow in our north and south harbours. I am looking at several options. One option is to rent a harvester locally and remove the weeds from the bottom. Be patient. Plans are in the works.

Harbour Master *Ralf Fiedler*

