

# 2021 LMYC Club Racing Sailing Instructions – Monday JOG & Wednesday PHRF Classes (As of July 13, 2021- REV 2)

## COVID-19 Requirements (Stage 2):

- Club grounds are limited to 25 persons and the clubhouse is “limited to 5 people” indoors (Subject to change in Stage 3);
- Masks must be worn when social distancing can't be maintained on the land, folding sails, etc.;
- For contact tracing per the Health Unit, each skipper must sign in and confirm the number of crew on his/her boat. In the event of an outbreak, these sheets will be used to contact the Skippers who are responsible to contact their crew members;
- All persons competing must complete a COVID-19 Self Declaration (enclosed) which will be filed with the Race Director only. Failure to comply will render participants ineligible; and
- If any participant's health status changes, you must advise the Race Director immediately @ 226-350-3315.

As this is an unusual year, as your Race Director, I may have missed a rule that might not be applicable in 2021. I would gladly welcome anyone pointing out an error to ensure fairness amongst all participants. In the spirit of fun and friendship, I say thank you for supporting your club and hope to see you on the water.

## 1. Rules

Each race in these series shall be governed by ISAF- RRS, CYA (Canadian prescriptions), except where modified by these Sailing Instructions and where modified they shall override.

## 2. Entering and Ratings

**2.1** All yachts must be pre-entered before they are allowed to race. This involves filling out an entry form in full, signing the waver, paying the fees to race that series and submitting said form and **fees to the LMYC Race Director. \*Fees must be paid by the second week\***. Finish times will not be taken for a boat not entered. Entry forms make up page 7 of these instructions. ECPHRF Association ratings/handicaps are used for these series. A copy of the yacht's current rating certificate or being on the ECPHRF Assoc. Paid up members of ECPHRF are allowed to race the yacht ECPHRF has on file without a rating penalty, except those entering JOG need not be members of ECPHRF to race.

**2.2 Invitation:** These races are open to members of LMYC and **approved** non-members alike, provided said non-members are accepted to race by the Race Director.

### 3. Skippering of Yachts

A person may not skipper another yacht in a race or series in which their own boat is registered in the same class, race or series. Due to the nature of racing in the river only LMYC members may skipper boats in these races (except as noted in "Invitation")

### 4. Sail restrictions – for JOG classes only

Sloop rigged yachts sailing in JOG shall not use more than **one** headsail at time and that sail shall be attached for its entire luff to the forestay in a fractional rig or headstay in a masthead rig. Yachts that are permanently rigged as a cutter may use both jib and staysail provided they both are attached for their entire length to their respective stays.

### 5. Race schedule, Race start times

**5.1** All JOG (Monday) & PHRF (Wednesday) races shall be sailed in a two season race schedule, the Summer Series (7 races)- starting July 5<sup>th</sup> & 7<sup>th</sup> through August 16<sup>th</sup> & 18<sup>th</sup> and the Fall Series (7 races) August 23<sup>rd</sup> & 25<sup>th</sup> through October 6<sup>th</sup> & 8<sup>th</sup>. (1 throw away race in each series). As we are timeline tight, we either make up on a Saturday or Sunday afternoon commencing at 1300 hrs (1:00 pm) as directed by the Race Director.

**5.2 Starting times: 18:30 Race Committee boat on station, 18:30 First Horn and Yellow Flag** raised for JOG & PHRF "A" Classes for consistency and maximum daylight throughout the entire series. **No 10-minute warning.**

### 6. Starting

**6.1** Races shall be started in accordance with RRS Rule 26.

**6.2** Note: Neither Rule 30.1, 30.2 nor 30.3 will be in effect.

**6.3 The JOG & PHRF Courses 1 to 6: start line** will be between a flag halyard supporting an orange flag on a committee boat anchored at approximately 42 degrees 12 min. N. Latitude, near the East shore of Fighting Island and a floating marker placed approximately perpendicular to the channel, depending on wind direction and at the discretion of the Race Committee, hence known as RC in these instructions. Once positioned at the start line the RC will hoist an Orange Flag. The Orange flag will remain hoisted until the last class has started and cleared the starting area. The RC may remove the starting line 4 minutes after the last start has commenced. See Section 5.2

**6.4 The PHRF Courses 10 & 11: start line** will be between a flag halyard supporting an orange flag on a committee boat anchored at approximately 42 degrees 10 min. N. Latitude, near the South shore of Turkey Island (DF4). A floating marker placed upriver from DF4 to indicate a Start Box Area. Once positioned at the start line the RC will hoist an Orange Flag. The Orange flag will remain hoisted until the last class has started and cleared the starting area. The RC may remove the starting line 4 minutes after the last start has commenced. See Section 5.2. **Any deviation from the new downriver courses to our traditional courses will be announced to all racers prior to the RC departing LMYC.**

**6.5 Official RC time:** the RC will attempt to synchronize their official race timer with the time on their onboard GPS unit and start their start sequence accordingly at 5 minute increments. NOTE: The hoisting of each Class flag signals 5 minutes to that class start and each flag raised or dropped by the RC indicates the RC official timing. Other timing such as **horn blasts or GPS time are NOT the official Race Committee time!**

**6.6 JOG & PHRF Courses 1 to 6:** **Start Box:** Yachts **not** engaged in their 5 minute start sequence **MUST STAY OUT OF START BOX**. The start box is defined at one end by **the starting line** and at the other end by channel markers **DF 15** and **DF 16**, thus creating an imaginary box. Any yacht not in their start sequence that interferes with a yacht starting may be protested and subsequently disqualified. The start box is pictured on the graphical courses page.

**6.7 PHRF Start Box Courses 10 & 11:** **Start Box:** Yachts **not** engaged in their 5 minute start sequence **MUST STAY OUT OF START BOX**. The start box is defined at one end by **the starting line (DF4)** and at the other end by our clubs floating orange marker thus creating an imaginary box. Any yacht not in their start sequence that interferes with a yacht starting may be protested and subsequently disqualified.

**6.8 Motoring Before the Start:** All yachts must turn off their engines prior to their **5 minute start of their Class Warning Signal**. (This was agreed upon during the February 2020 Racer's Meeting).

**6.9 Class flags on RC boat and starting sequence:** Class A: Solid yellow flag, Class B: Solid green flag and Class C: Solid orange flag. Starts are in that order. Classes B and C start sequences begin at the start of the previous class unless delayed or postponed by the RC. NOTE to Class C: Do not confuse the RC boat on station flag - orange flag - with your class flag. The RC Flag will be on the upper mast and Racing Flags on the lower yardarms.

## 7. Committee Boat protection Mark

If the RC boat sets a protection mark, it shall be considered part of the RC boat. Therefore no yacht may pass between said protection mark and the RC boat. Also, anyone hitting said mark is to have hit the RC boat and must abide by the RRS or face protest and disqualification.

## 8. Radio Communication

The RC shall monitor V.H.F. Channel 68 at all times. Any announcements from the RC will be made on Ch68. Also, the skipper of a yacht that drops out of a race **MUST** inform the RC asap, preferably by VHF radio, Ch68. It is each Skipper's responsibility to ensure their VHF radio is on and in good working order to hear all announcements.

## 9. Course Display

A number board with the course to be sailed shall be displayed on the RC boat, normally at the bow. These course boards are solid white or yellow with a black number, **Courses: 1, 2, 3, 4, 5, 6, 10 & 11**. If only one board is present then every class sails the same course. If a second board is also present then A class and B class sail the longer course and C class sails the shorter course (that is on the second board).

## 10. The Finish Line

**10.1 JOG & PHRF Courses 1 to 6:** finish line shall be between Bifurcation marker **DGB** and the flag on the RC boat, which will be anchored to the East of DGB, unless course is shortened

**10.2 PHRF Courses 10 & 11:** finish line shall be between marker **DF8** and the flag on the RC boat, unless course is shortened

## 11. Shortening the Course after Start

**11.1** The RC may, at their discretion, decide to shorten the course after the start. This could be due to a lack of wind or imminent dangerous weather. The RC, if sensing a possible shortened course, will motor downstream and if choosing to shorten the course they may hoist **code flag "S" and give 2 horn blasts**. Once they position themselves at a shortened course finish line they shall hoist a solid blue flag signifying that they are on station at the finish line. The RC boat shall be located on the opposite side of the channel from a marker in the DF channel near Turkey Island. The way to sail the shortened course is to round the bottom mark of a course and sail upstream to the new finish line which the RC, depending on the chosen course, could use **DF3, DF4, DF6, DF7, DF8, DF9 OR DF12** as a shortened course finish line marker, **but the RC shall attempt to use DF7 whenever possible. Also, the RC shall attempt to signal a shortened course prior to the first boat rounding the bottom mark and heading up stream. As noted, we will put a yellow strobe light on the RC Tug so that all racers can clearly see the finish line from a distance if the race is shortened.**

## 12. Time Limit

The time limit for each class shall be 2 hours after their start. If no boats in their class finish within the 2 hour limit, the race will be re-sailed. If 1 or more boats finish within 2 hours, the race is official and times will be recorded for the rest of the class. The committee boat will remain on station for 30 minutes after the first finisher after which they may leave. Any yachts finishing more that 30 minutes after their time limit must take their own finish time and present it to the RC asap so not to be recorded as DNF.

## 13. Abandoned Races

If a race is started but not completed due to time limit or abandonment, all yachts that started will be recorded as "DNF". If The RC chooses to abandon the race they may hoist the code flag "N" followed by 3 horn blasts. This will signify that the race has been abandoned and will be re-sailed on another day. The RC may also use their V.H.F. radio to inform the racers of the abandonment.

## 14. Race postponed on Shore

From time to time, due to the threat of **imminent** severe and dangerous weather, a race may need to be postponed until another day. The RC and or RD will attempt to decide by 18:00 the day of the race if they wish to postpone the race. All things will be considered before making this decision. At this time LMYC doesn't have a suitable messaging system in place to inform skippers so they can inform their crew of the decision to race or not. All skippers and crew should assume the race will take place and should show up at LMYC regardless of weather forecasts. Rain or heavy winds will not be a deciding factor in whether to race or not.

## 15. Protests

**15.1** Protests shall be submitted in writing on a **US Sailing/CYA Standard Protest Form only**. These forms are available from the race committee or online. Protests must be lodged with the RC within 1 hour of the RC boat returning to her berth. Also, if possible please notify the RC of your intentions to protest via V.H.F. radio or when crossing the finish line. A Protest Committee will normally hear protests on the next evening following day of the race. Protest Notices shall be posted in the Club House within 30 minutes of the RC of when they receive the protest form. This is to inform the parties of the protest when and where a hearing will take place and allows the parties of the protest to gather witnesses if so desired.

## 16. Alternative penalties

The percentage penalty, Rule 44.3 of RRS (20% of the number of boats entered, with 3 place minimum) **or** 720 degree turn penalty, Rule 44.2 of RRS apply.

## 17. Scoring

**17.1** Overall series –Not applicable for 2021.

**17.2** A yacht may discard 1 race score for the 2021 Series (Summer & Fall). Ties are broken according to Appendix A8.1

Appendix A9 example: DNS – Did Not Start – points received = 1 point more than # of boats that came to starting area  
DNF – Did Not Finish – points received = 1 point more than # of boats that came to starting area  
DSQ – Disqualified – points received = 1 point more than # of boats that came to starting area  
DNC – Did Not Come to Starting Area – Points received = 1 more point than number of boats registered in that series

**17.3 Disqualification:** A yacht that has been disqualified by a protest committee in a race must use the race score in which the DSQ happened in her scoring for that series and for the Overall series.

## 18. Unsportsmanlike Conduct:

**Our RC are all volunteers. They make mistakes, just like you.** Anyone from a boat racing in a series who badgers the RC for an error in the starting sequences, or for any other reason, may be protested, under Rule 69.1 (a) by the RC and subsequently that yacht may be disqualified from that race!

## 19. Make up races:

In the event that a race is cancelled or abandoned, that race will be re-sailed on a day selected by the Race Director. Any boat that is registered and has paid the fee to race in that series is entitled to race in the make- up race. See paragraph 5.1

## 20. Traditional **JOG & PHRF** Course Descriptions (please also refer to graphical race course page)

**Course #1:** Downstream from the start line leaving Bifurcation marker “DGB” and Turkey Island to port. Round green spar “DF3” to port. Head upstream leaving Turkey Island to starboard and finish between bifurcation mark “DGB” to port and the RC boat to starboard. (Handicap Distance 4.46 Nautical Miles)

**Course #2:** Downstream from the start line leaving bifurcation mark “DGB” and Turkey Island to port. Round green spar “DF1” to port. Head upstream leaving Turkey Island to starboard and finish between bifurcation mark “DGB” to port and RC boat to starboard. (Handicap Distance 5.43 Nautical Miles)

**Course #3:** Downstream from the start line leaving bifurcation mark “DGB” and Turkey Island to port. Round green spar “DF1” to starboard, red nun “D84” to port, red/green structural buoy “DFB” to port and red spar “DF2” to port. Head upstream leaving Turkey Island to starboard and finish between “DGB” to port and RC boat to starboard. (Handicap Distance 6.37 Nautical Miles)


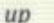
**Course #4:** Downstream from start line leaving bifurcation mark “DGB” and Turkey Island to port. Round red spar “DF2” to starboard, red/green structural buoy “DFB” to starboard, red nun “DF 84” to starboard and round “DF1” to port. Head upstream leaving Turkey Island to starboard and finish between bifurcation mark “DGB” to port and RC boat to starboard. (Handicap Distance 6.37 Nautical Miles)

**Course #5:** Downstream from start line leaving bifurcation mark “DGB” and Turkey Island to port. Round red spar “DF6” to port. Head upstream leaving Turkey Island to starboard and finish between bifurcation mark “DGB” to port and RC boat to starboard. (Handicap Distance 2.95 Nautical Miles)

**Course #6:** Downstream from the start line leaving bifurcation mark “DGB” and Turkey Island to port. Round red spar “DF2” to port. Head upstream leaving Turkey Island to starboard and finish between bifurcation mark “DGB” to port and RC boat to starboard. (Handicap Distance 5.43 Nautical Miles)


**Map found on next page**


## Graphical Race Course Descriptions

All courses generally follow  on the down bound direction and then follow  on the up bound direction.

Course #1 follows 

Course #2 follows 

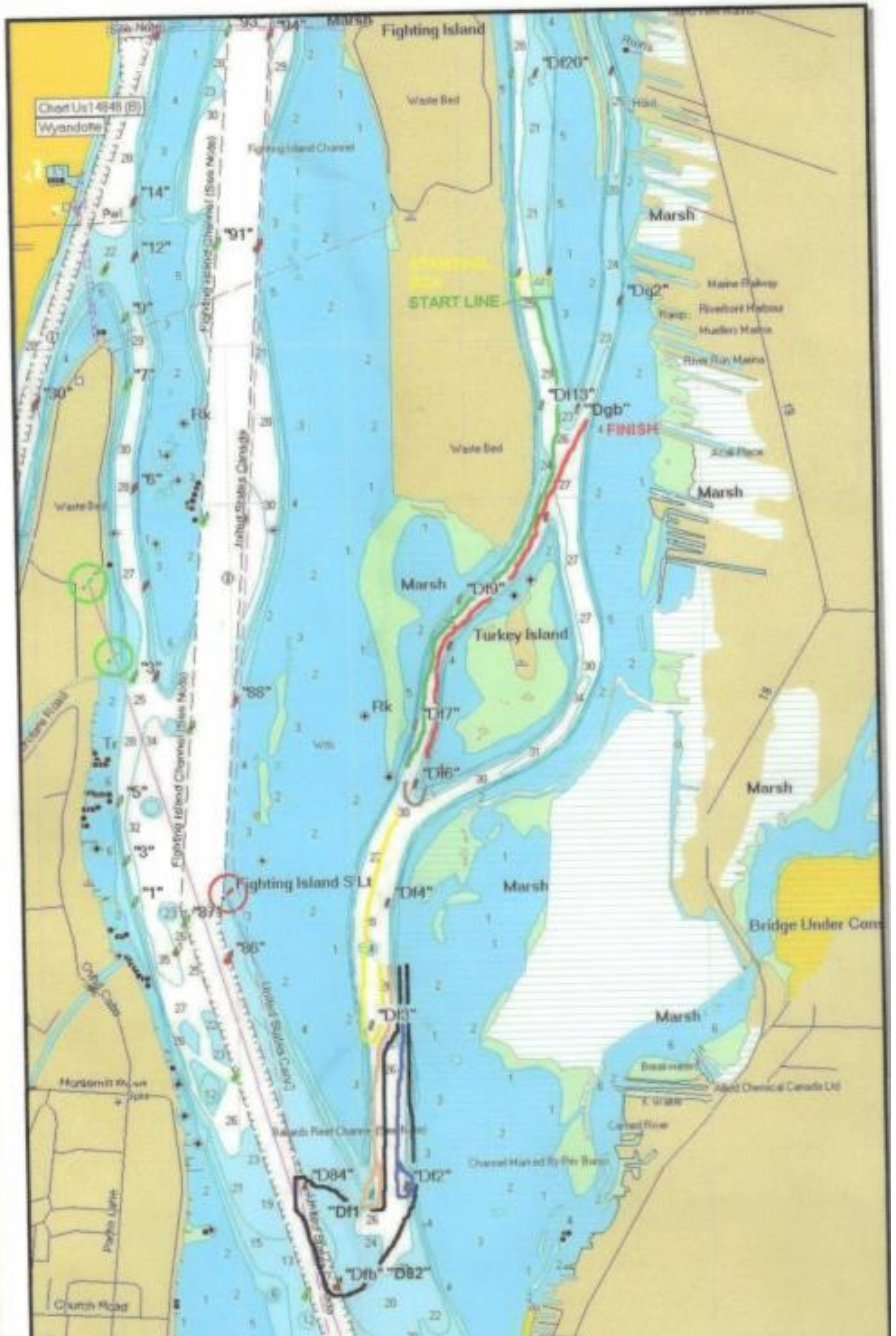
Course #3 follows  in the counter-clockwise direction

Course #4 follows  in the clockwise direction

Course #5 follows 

Course #6 follows 

### START BOX DETAIL



## NEW-PHRF Courses (Downriver)

**PHRF Course 10 (4 Legs): 6.38 NM** – Start DF4, rounding D78 to port, upriver to DF1, rounding to port, return down river to D78 rounding to port, return to finish at DF4 and RC Boat.



Alternate Finish is at DF8 for the maximum race opportunity of 7.21 NM if RC extends course based on winds.



**PHRF Course 11 (4 Legs): 4.72 NM** – Start DF4, rounding D80 to starboard, upriver to D84, rounding to port, return down river to D80 rounding to port, return to finish at DF4 and RC Boat. Be advised that the Bifurcation Mark for the Main Channel and Fighting Island is in between D80 & D84



Alternate Finish is at DF8 for the maximum race opportunity of 5.55 NM if RC extends course based on winds.

Check that all safety equipment complies with all regulations, and you are prepared for anything. Have fun and stay safe. Remember, RC monitors VHF 68 or contact Walt's cell at **226-350-3315** in the event of an emergency.

# LaSalle Mariner's Yacht Club 2021

## Race Entry Form

### Vessel Information

Name: \_\_\_\_\_

Rating: \_\_\_\_\_

Sail Number: \_\_\_\_\_

### Skipper Information

Name: \_\_\_\_\_

Email: \_\_\_\_\_

Phone Number: \_\_\_\_\_

### Insurance Information

Insurer Name: \_\_\_\_\_

Policy Number: \_\_\_\_\_

### Desired Racing Series

Summer-7 Races		Fall-7 Races	
<input type="checkbox"/> JOG	<input type="checkbox"/> PHRF	<input type="checkbox"/> JOG	<input type="checkbox"/> PHRF

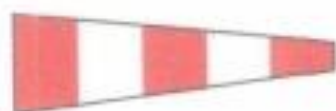
### Entry Details

- \$25 per series, per race night, \$40 for all two series per race night
- i.e. \$40 Summer & Fall JOG or PHRF, \$80 Summer & Fall JOG & PHRF
- Acceptable forms of payment include:
  - a. Manual Registration & Cheque (Payable to "LaSalle Mariners Yacht Club") via Walter Argent (Race Director Box)
  - b. **CASH WILL NOT BE ACCEPTED** due to lack of traceability

# RACE SIGNALS

The meanings of visual and sound signals are stated below. An arrow pointing up or down ( $\uparrow \downarrow$ ) means that a visual signal is displayed or removed. A dot ( $\bullet$ ) means a sound; five short dashes (-----) mean repetitive sounds; a long dash (—) means a long sound. When a visual signal is displayed over a class flag, the signal applies only to that class.

## Postponement Signals



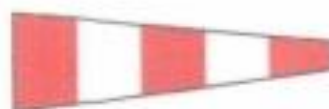
$\uparrow \bullet \bullet \downarrow \bullet$

**AP** Races not started are *postponed*. The warning signal will be made 1 minute after removal unless at that time the race is *postponed* again or *abandoned*.



$\uparrow \bullet \bullet$

**AP over H** Races not started are *postponed*. Further signals ashore.



$\uparrow \bullet \bullet$

**AP over A** Races not started are *postponed*. No more racing today.



Pennant 1  $\uparrow \bullet \bullet \downarrow \bullet$



Pennant 2  $\uparrow \bullet \bullet \downarrow \bullet$



Pennant 3  $\uparrow \bullet \bullet \downarrow \bullet$



Pennant 4  $\uparrow \bullet \bullet \downarrow \bullet$



Pennant 5  $\uparrow \bullet \bullet \downarrow \bullet$



Pennant 6  $\uparrow \bullet \bullet \downarrow \bullet$

**AP over a numeral pennant 1-6** *Postponement* of 1-6 hours from the scheduled starting time.

## Abandonment Signals



$\uparrow \bullet \bullet \bullet \downarrow \bullet$

**N** All races that have started are *abandoned*. Return to the starting area. The warning signal will be made 1 minute after removal unless at that time the race is *abandoned* again or *postponed*.



$\uparrow \bullet \bullet \bullet$

**N over H** All races are *abandoned*. Further signals ashore.



$\uparrow \bullet \bullet \bullet$

**N over A** All races are *abandoned*. No more racing today.

### Preparatory Signals



↑ • ↓ —

**P** Preparatory signal.



↑ • ↓ —

**I** Rule 30.1 is in effect.



↑ • ↓ —

**Z** Rule 30.2 is in effect.



↑ • ↓ —

**Black flag.** Rule 30.3 is in effect.

### Recall Signals



↑ •

**X** Individual recall.



↑ • • ↓ •

**First Substitute** General recall. The warning signal will be made 1 minute after removal.

### Shortened Course



↑ • •

**S** The course has been shortened. Rule 32.2 is in effect.

### Changing the Next Leg



-----  
**C** The position of the next *mark* has been changed:



to starboard;



to port;



to decrease the length of the leg;



to increase the length of the leg.

### Other Signals



↑ •

**Orange flag.** This Race committee boat is in position at the starting line.



-----

**M** The object displaying this signal replaces a missing *mark*.



↑ •

**Y** Wear a personal flotation device.



(no sound)

**Blue flag** or shape. This race committee boat is in position at the finishing line.